

BALDOR® • **RELIANCE**

Product Information Packet

UCLE1015

10-15HP,3500RPM,1PH,60HZ,215Z,3750LC,TEN

Copyright © All product information within this document is subject to Baldor Electric Company copyright © protection, unless otherwise noted.

Part Detail							
Revision:	F	Status:	PRD/A	Change #:		Proprietary:	No
Type:	AC	Prod. Type:	3750LC	Elec. Spec:	37WGY921	CD Diagram:	
Enclosure:	TEAO	Mfg Plant:		Mech. Spec:	37M301	Layout:	
Frame:	215Z	Mounting:	F1	Poles:	02	Created Date:	01-15-2010
Base:	RG	Rotation:	R	Insulation:	F	Eff. Date:	11-08-2012
Leads:	2#8 A PH 32" long,2#14	Literature:	Y	Elec. Diagram:		Replaced By:	

Nameplate NP1279L								
CAT.NO.	UCLE1015							
SPEC.	37M301Y921G1							
HP	10-15							
VOLTS	230							
AMP	46-61							
RPM	3500							
FRAME	215Z	HZ				60	PH	1
SER.F.	1.00	CODE				K	DES	- CL F
NEMA-NOM-EFF	PF							
RATING	40C AMB-CONT							
CC	USABLE AT 208V							
DE	6307	ODE				6206		
ENCL	TEAO	SN						

Nameplate NP1263L									
CAT.NO.	UCLE1015								
SPEC.	37M301Y921G1								
HP	10-15								
VOLTS	230								
AMP	46-61								
RPM	3500								
FRAME	215Z	HZ	60	PH	1				
SER.F.	1.00	CODE	K	DES	-	CL	F		
NEMA-NOM-EFF	PF								
RATING	40C AMB-CONT								
CC	USABLE AT 208V								
DE	6307	ODE	6206						
ENCL	TEAO	SN							

Parts List		
Part Number	Description	Quantity
SA190187	SA 37M301Y921G1	1.000 EA
RA177870	RA 37M301Y921G1	1.000 EA
OC3060F10SP	CYL OIL CAP 60MFD/370V	1.000 EA
EC4270C06	ELEC CAP, 270-324 MFD, 250V, 2.06D X 4.	2.000 EA
HW3200A01	3/8-16X3/4 I-BLT WELDED F/S	1.000 EA
HA6011A01	ADAPTOR, MACH	1.000 EA
36GS5001	GASKET CONDUIT ADAPTOR	1.000 EA
51XF2520A08	SCREW, HEX SER SLT HD, ZN 1/4-20 X .50 L	2.000 EA
52XF1032G04	S0-32 X 1/4, HX HD SR SL	1.000 EA
37EP3101B62	FR ENDPLATE, MACH	1.000 EA
HW4500A19	1/4-28X1/4 SLOTTED PLUG F/S	2.000 EA
13XT0832A07	8-32X7/16 TYP 23 PAN HD SLT DX	2.000 EA
NS2501A01	INSULATOR, CAPACITOR	2.000 EA
35CB4802A02SP	CAPACITOR COVER, STAMPED X W/AUTOPHORET	2.000 EA
35GS3003A02	1/16" NEOPRENE BOX GASKET FT. SMITH MADE	2.000 EA
51XB1016A05	10-16X5/16HX WA SL SR TYB (F/S)	4.000 EA
HW5100A06	W2420-025 WVY WSHR (WB)	1.000 EA
37EP3100A07	PU ENDPLATE, MACH., LOCKED BEARING	1.000 EA
HW4500A19	1/4-28X1/4 SLOTTED PLUG F/S	2.000 EA
10XN2520A28	1/4-20X 1 3/4 HEX HD	4.000 EA
HW1001A25	LOCKWASHER 1/4, ZINC PLT .493 OD, .255 I	4.000 EA
XY3118A12	5/16-18 HEX NUT DIRECTIONAL SERRATION	4.000 EA
HW2501E18	KEY, 1/4 SQ X 2.000	1.000 EA
HA7000A02	KEY RETAINER RING, 1 1/8 DIA, 1 3/8 DIA	1.000 EA

Parts List (continued)		
Part Number	Description	Quantity
85XU0407S04	4X1/4 U DRIVE PIN STAINLESS	2.000 EA
LB1001	LABEL, GREASE-EXXON POLYREX EM	1.000 EA
LB1115	LABEL,LIFTING DEVICE	1.000 EA
MJ1000A75	GREASE, POLYREX EM EXXON	0.050 LB
MG1025Z20	ACTIVATOR WILKOFAS 060.32	0.010 GA
MG1025C02	PAINT, 787.105 LITE TAN EPOXY (USE W/MG1	0.028 GA
LD5000A34	LEAD ASSY, ML1400DF08 W/#10 RING 12"	1.000 EA
LD5000B63	LEAD ASSY, ML14-8C14, 12", WD1000A03	1.000 EA
SP5172A10	TORQ MODEL 37 TYPE LC SPLIT CAPS,	1.000 EA
WD1000A15	3-520132-2 AMP FLAG (4M/RL NON-CANC/NON-	8.000 EA
HA3104A18	THRUBOLT- 5/16-18 X14.000	4.000 EA
LB1119	WARNING LABEL	1.000 EA
LB1125C01	STD (STOCK) CARTON LABEL BALDOR WITH FLA	1.000 EA
LB1161	LABEL,THERMOSTAT (ROLL LABEL)	1.000 EA
LC0208	CONNECTION LABEL X	1.000 EA
NP1279L	ALUM FARM DUTY UL CSA CC	1.000 EA
NP1263L	AUX, GP, ALUM, CC, LASER ETCHED	1.000 EA
37PA1052	PACKAGING GROUP, 150 LB MTR 2 X 4 RUNNER	1.000 EA
NS2539	INSULATOR FOR 37 FRAMESWITCH (MH1011A10)	1.000 EA

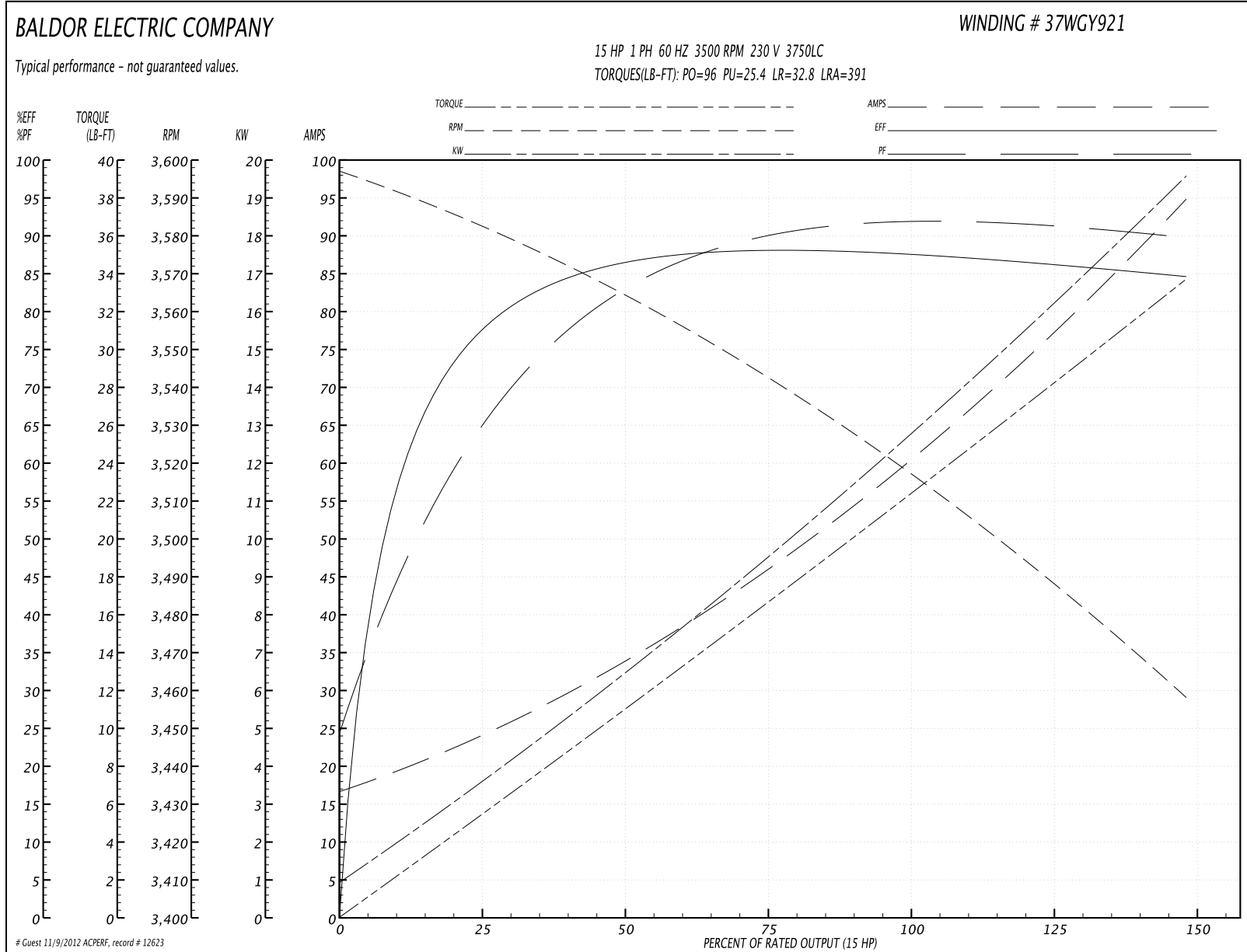
Accessories		
Part Number	Description	Multiplier
37-3301	C FACE KIT	P1

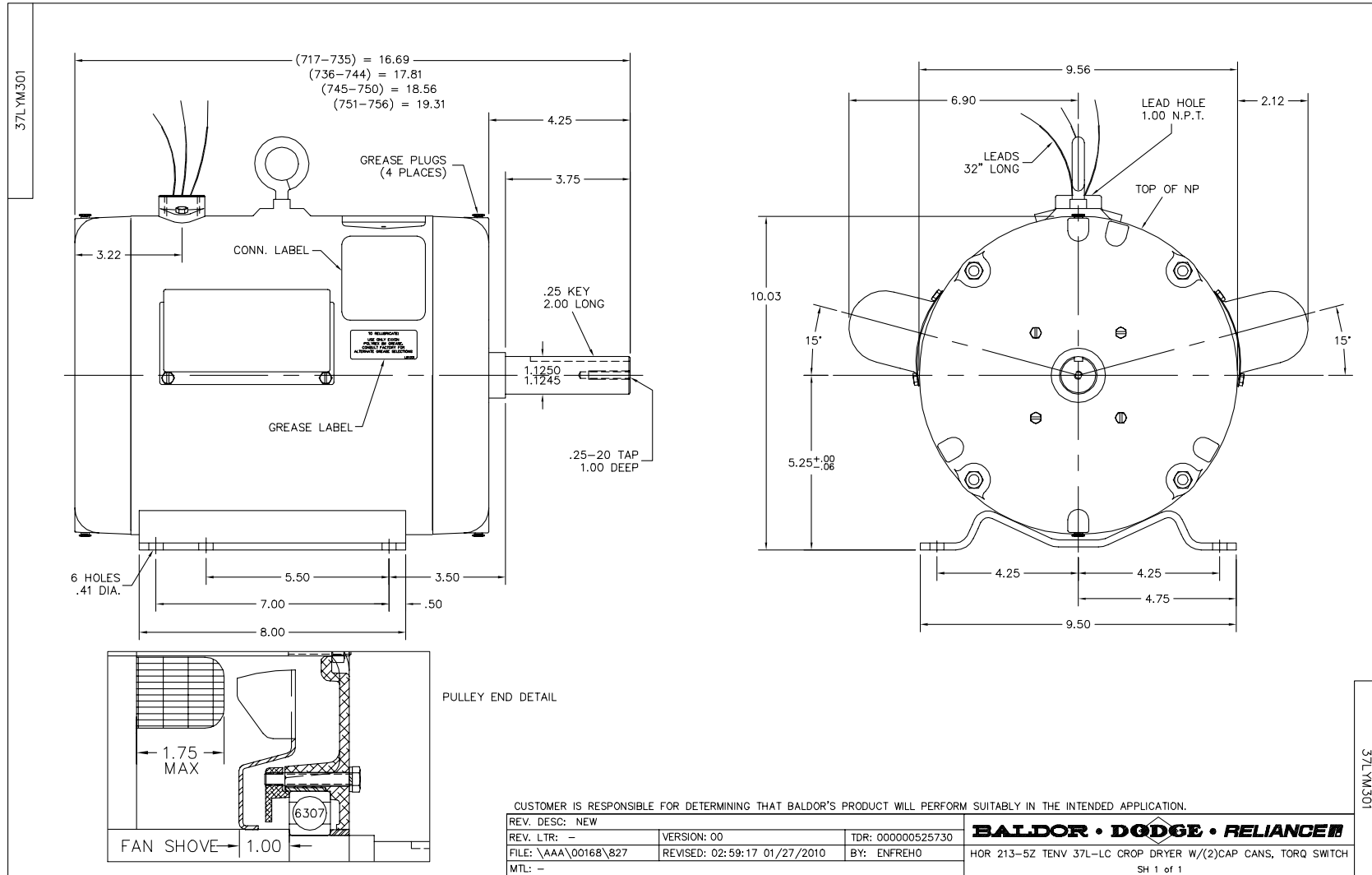
Performance Data at 230V, 60Hz, 15.0HP (Typical performance - Not guaranteed values)

General Characteristics			
Full Load Torque:	22.5 LB-FT	Start Configuration:	DOL
No-Load Current:	17.3 Amps	Break-Down Torque:	96.0 LB-FT
Line-line Res. @ 25°C.:	0.0724 Ohms A Ph / 0.851 Ohms B Ph	Pull-Up Torque:	25.4 LB-FT
Temp. Rise @ Rated Load:		Locked-Rotor Torque:	32.8 LB-FT
Temp. Rise @ S.F. Load:		Starting Current:	391.0 Amps

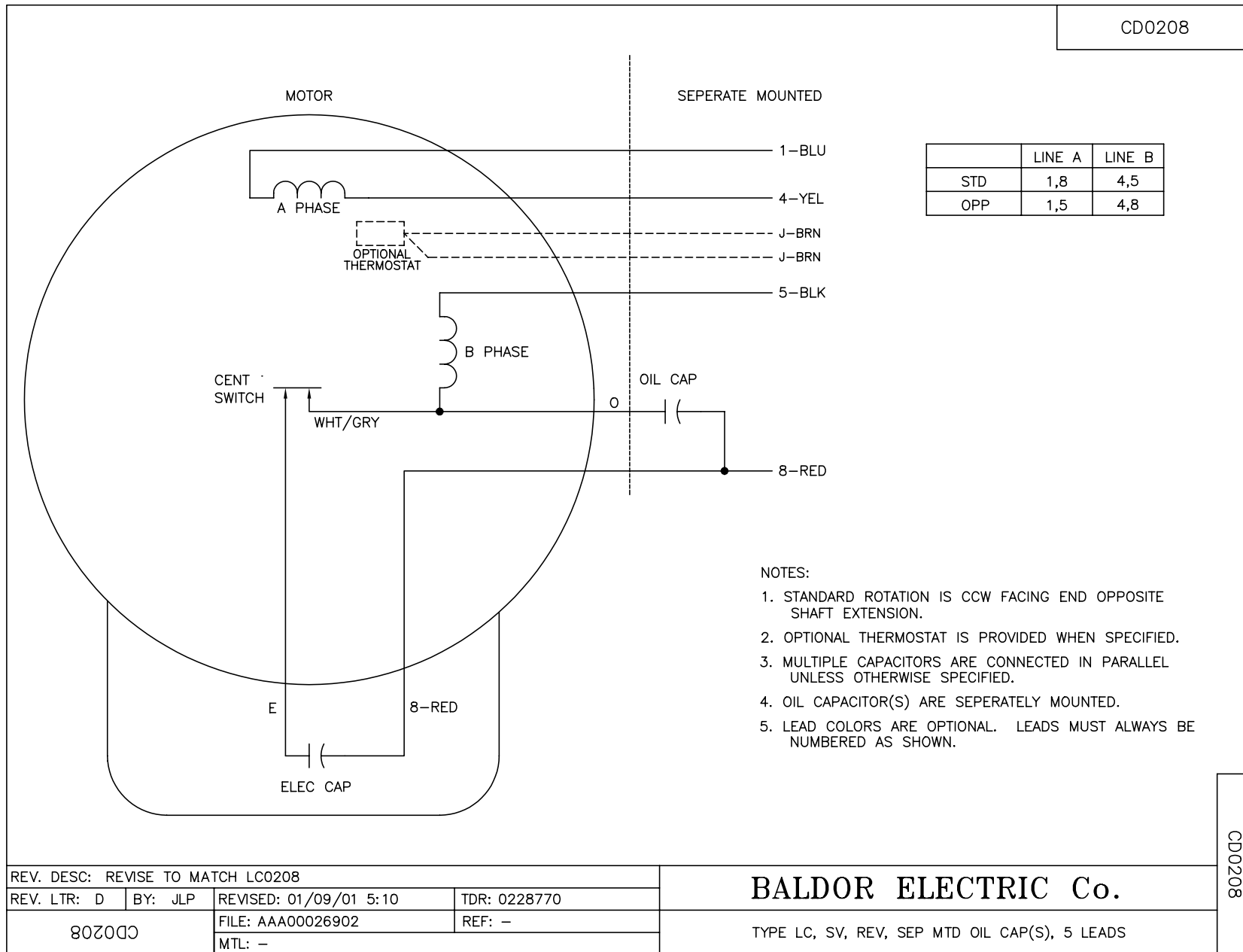
Load Characteristics							
% of Rated Load	25	50	75	100	125	150	S.F.
Power Factor:	70.0	85.0	89.0	91.0	91.0	90.0	0.0
Efficiency:	76.8	85.9	88.1	87.8	86.7	84.3	0.0
Speed:	3580.0	3562.0	3542.0	3518.0	3491.0	3456.0	0.0
Line Amperes:	23.3	34.0	46.9	61.2	77.0	94.6	0.0

Performance Graph at 230V, 60Hz, 15.0HP Typical performance - Not guaranteed values





CD0208



REV. DESC: REVISE TO MATCH LC0208			
REV. LTR: D	BY: JLP	REVISED: 01/09/01 5:10	TDR: 0228770
80200		FILE: AAA00026902	REF: -
		MTL: -	

BALDOR ELECTRIC Co.

TYPE LC, SV, REV, SEP MTD OIL CAP(S), 5 LEADS

CD0208