

BALDOR® • RELIANCE

Product Information Packet

CTM1763T

25HP, 1775RPM, 3PH, 60HZ, 284T, TEFC, FOOT,

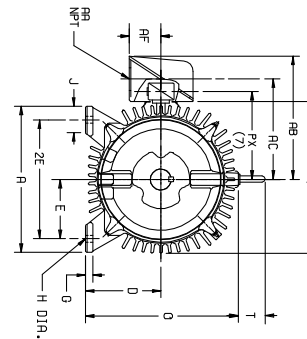
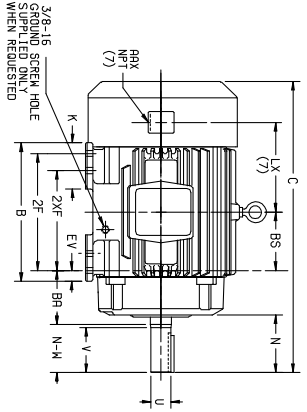
Copyright © All product information within this document is subject to Baldor Electric Company copyright © protection, unless otherwise noted.

Part Detail			
Model Number:	CTM1763T	Environment:	Harsh / Mill & Chemical
Voltage:	460/ 460	HP:	25/6.25
RPM:	1775/885	Efficiency:	Premium (XE)
Phase:	3	Frequency:	60
Inverter Duty:	*	Enclosure:	TEFC
Frame Group:	280	Frame Size:	284T
Features:	Cooling Tower Duty	Mounting:	Foot Mounted
Service Factor:	1.15	Enclosure Group:	TEFC
Weight:	415	Price Symbol:	L1
Speed Range:		Insulation Class:	F
Nema Design:		Encl. Enhancement:	P28G6657
Catalog Page:	M-41,B	Dimension Sheet:	611740-501
Connection Diagram:	416820-196	Electric Design:	E03423-D-R001
Single HP:	25	Get Notes:	Cooling Tower Duty
Revision:		Instruction Manual:	MN408
Application:	2 Speed 1Wdg. Variable Torque	Epact:	Y
Scaled Drawing:	A83552	Obsolete:	N
Last Data Source:	RGG2,MADD	Bearing Type:	
Electrical Type:	PM	Mounting Pos.:	
Ambient:	40	Duty:	CONT
Amps:	31.2/12.1	Nominal Eff.:	91.7
Kva Code:	H	Power Factor:	
Poles:	04	Literature:	

DUTY MASTER ALTERNATING CURRENT MOTORS

ENCLOSURE: TOTALLY ENCLOSED
 Squirrel-Cage Induction
 CAST IRON CONSTRUCTION
 COOLING: FAN COOLED
 MOUNTING: FOOT

FRAMES 250T THRU 440T



DIMENSIONS ARE IN INCHES; SEE SHEET 2 FOR DIMENSIONS IN MILLIMETERS

FRAME	A	D(2)	E	G	H	J	K	O	P	T	CAST IRON TERMINAL BOX (7) AUX. CONDUIT BOX		BA	EV					
											BS	AC	BA	EV					
254T-284T	12.50	6.25	5.00	7.5	5.6	2.50	---	13.25	13.25	2.44	1-1/4	10.61	8.81	2.50	3/4	6.31	9.12	4.25	1.00
284T-286TS	13.25	7.00	5.50	7.5	5.6	2.50	---	14.25	14.88	2.44	1-1/2	12.62	10.19	3.00	3/4	6.38	10.50	4.25	1.00
286T	15.50	8.00	6.25	8.8	6.9	2.25	4.50	16.69	17.00	2.44	2	15.44	11.69	3.62	3/4	8.00	10.50	5.25	1.38
324T-326TS	17.00	9.00	7.00	8.8	6.9	2.25	3.88	18.50	19.50	2.94	5	18.00	13.81	4.12	3/4	8.38	11.62	5.88	1.38
404T-405TS	19.00	10.00	8.00	11.21	8.1	3.25	4.62	21.31	22.50	2.94	3	19.25	15.06	4.12	3/4	9.62	14.44	6.62	1.13
444T-445TS	21.00	11.00	9.00	11.21	8.1	3.25	5.25	23.38	25.25	3.25	3	22.19	17.44	6.00	3/4	11.12	15.25	7.50	1.25

FRAME	C	BS	B	2E	(4)	N	N-W(6)	U (3)	V	SQ.	LGTH.	WEIGHT
SIZE					2YE							(LBS.)
254T	24.98	6.00	12.00	6.25	4.12	4.00	1.625	3.75	3.75	2.88	3.35	3.35
284T	27.28	6.50	13.00	10.00	9.50	4.62	1.875	3.38	3.00	3.25	3.75	4.25
286T	27.44	5.50	13.00	11.00	9.50	3.62	3.25	1.625	3.00	3.75	1.88	4.75
286TS	28.06	5.50	13.00	11.00	5.00	4.62	1.875	4.38	5.00	3.25	4.80	4.90
324T	30.44	6.00	14.75	14.75	3.62	3.25	2.125	5.00	5.00	3.88	5.90	5.90
324TS	28.94	6.00	14.75	12.00	10.50	4.12	3.75	1.875	3.50	5.00	2.00	6.50
326T	30.44	6.00	14.75	12.00	5.62	5.25	2.125	5.00	5.00	3.88	6.30	6.30
326TS	28.94	6.00	14.75	12.00	4.12	3.75	1.875	3.50	5.00	2.00	6.50	6.50
364T	33.44	6.12	15.00	11.25	6.25	5.88	2.375	5.62	6.25	4.25	8.85	8.85
364TS	31.34	6.12	15.00	12.25	4.12	3.75	1.875	3.92	3.00	2.00	8.85	8.85
365T	31.31	6.12	15.00	12.25	4.12	3.75	1.875	3.50	5.00	2.00	8.84	8.84
404T	38.31	6.88	16.00	12.25	7.50	7.25	2.875	7.00	7.50	5.62	12.50	12.50
404TS	35.31	6.88	16.00	13.75	4.50	4.25	2.125	4.00	5.00	2.75	12.11	12.11
405T	38.31	6.88	16.00	13.75	7.50	7.25	2.875	7.00	7.50	5.62	12.60	12.60
405TS	35.31	6.88	16.00	13.75	4.50	4.25	2.125	4.00	5.00	2.75	12.51	12.51
444T	44.62	8.25	19.00	14.50	8.94	8.50	3.375	8.25	8.75	6.88	16.70	16.70
444TS	40.88	8.25	19.00	14.50	5.19	4.75	2.375	4.50	6.25	3.00	16.64	16.64
445T	44.62	8.25	19.00	16.50	8.94	8.50	3.375	8.25	8.75	6.88	16.60	16.60
445TS	40.88	8.25	19.00	16.50	5.19	4.75	2.375	4.50	6.25	3.00	16.44	16.44

- (1) SPECIAL DIMENSIONS APPLYING TO THIS ORDER ON THIS LINE:
- (2) "G" VARIES --- 2.50T +.00, -.03
 --- 3.60T +.00, -.06
 --- 4.625 D.I.A. +.0000, -.0005
 --- 4.625 D.I.A. +.0000, -.0005
- (3) "U" VARIES ---
 --- 6.625 AND LARGER +.000, -.0001.
- (4) ALL FRAMES HAVE EIGHT MOUNTING HOLES FOR DUAL MOUNTING.
- (5) MOTOR WEIGHTS MAY VARY BY 15% DEPENDING UPON RATING.
- (6) "N-W" VARIES +.00, -.25.
- (7) AUXILIARY CONDUIT BOX SUPPLIED WHEN SPECIFIED
 CONDUIT BOXES LOCATED ON OPPOSITE SIDE WHEN "F-2W"-1,
 "W-4W"-5W-7, OR "C-1" MOUNTING IS SPECIFIED.
 IF MOUNTING CLEARANCE DETAILS ARE REQUIRED, CONSULT
 FACTORY.
 MAXIMUM PERMISSIBLE SHAFT RUNOUT WHEN MEASURED
 AT END OF STD. SHAFT EXTENSION IS .002 T.I.R. UP TO
 AND INCLUDING 1.625 DIA. AND .003 T.I.R. 1.625 DIA.
 TO 5 INCH DIA.

FRAME _____ TYPE _____ CERTIFIED FOR _____
 ORDER _____ ITEM _____ HP _____ RPM _____ PH _____ HZ _____ VOLTS _____
 SALES ORDER _____ APPROVED BY _____ DATE _____

CUSTOMER IS RESPONSIBLE FOR DETERMINING THAT MOTOR PERFORMANCE IS SUITABLE IN THE APPLICATION.

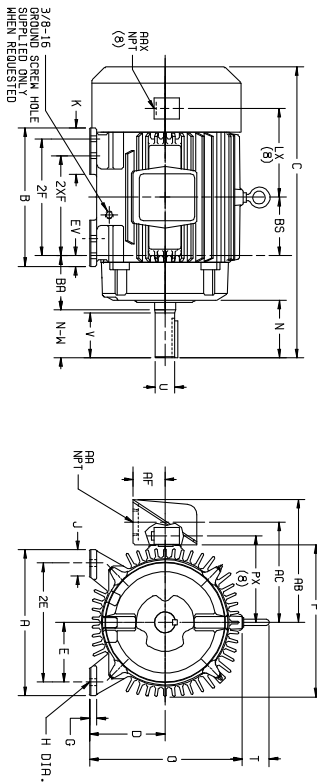
REV. DESC: REMOVING TITLEBLOCK	VERSION: 01	TDR: 000000448517
REV. LTR: A	REVISED: 14:06:59 11/07/2007	BY: CONBPM
MTL: -		

BALDOR • DODGE • RELIANCE
 DIM SHT 250T-440T TEFC FT MTG STD T & TS SGL EXT XT

611740-501-SH1

611740-501-SH2

DUTY MASTER ALTERNATING CURRENT MOTORS
 SQUIRREL-CAGE INDUCTION
 CAST IRON CONSTRUCTION
 ENCLOSURE: TOTALLY ENCLOSED
 MOUNTING: FOOT
 COOLING: FAN COOLED
 FRAMES 250T THRU 440T



DIMENSIONS ARE IN MILLIMETERS. SEE SHEET 1 FOR DIMENSIONS IN INCHES.

FRAME	A	D(2)	E	G	H	J	K	O	P	T	CAST IRON TERMINAL BOX (BAUX) CONDUIT BOX	BA	EV						
254T-286T	317.5	158.8	127.0	19.0	14.2	63.5	---	336.5	335.5	62.0	1-1/4	274.6	223.8	63.5	3/4	160.3	236.5	108.0	25.4
284T-286TS	349.2	177.8	139.7	19.0	14.2	63.5	---	374.6	373.0	62.0	1-1/2	305.5	258.8	76.2	3/4	174.8	266.7	120.7	25.4
324T-36TS	393.7	203.2	158.8	22.4	17.5	69.9	14.3	423.9	431.8	62.0	2	392.2	296.9	91.9	3/4	203.2	266.7	133.3	35.1
364T-36TS	431.8	228.6	177.8	22.4	17.5	69.9	14.3	469.9	495.3	74.7	5	457.2	350.8	104.6	3/4	212.9	295.1	149.4	35.1
404T-40TS	482.8	254.0	203.2	28.4	20.6	82.5	17.3	541.3	571.5	74.7	5	488.9	382.5	104.6	3/4	244.3	366.8	168.1	28.7
444T-44TS	533.4	279.4	228.6	28.4	20.6	82.5	17.3	593.9	641.3	82.5	5	563.6	443.0	152.4	3/4	282.4	387.3	190.5	31.7

FRAME	C	BS	B	ZF	(4)	N	SHAFT AND KEY	SO.	LGTH.	WEIGHT		
254T	623.8	127.0	304.8	---	209.6	104.6	101.6	41.27	95.3	9.52	73.2	151
284T	623.8	127.0	304.8	254.0	---	104.6	101.6	41.27	95.3	9.52	73.2	158
284T	697.0	139.7	330.2	---	241.3	127.0	117.3	41.27	111.3	12.70	82.5	215
284T	661.9	139.7	330.2	---	241.3	91.9	82.5	41.27	76.2	9.52	47.8	215
288T	697.0	139.7	330.2	279.4	---	127.0	117.3	47.63	111.3	12.70	82.5	222
288TS	661.9	139.7	330.2	279.4	---	91.9	82.5	41.27	76.2	9.52	47.8	222
324T	773.2	152.4	374.6	---	266.7	142.7	133.3	53.97	127.0	12.70	98.6	267
324T	773.2	152.4	374.6	304.8	---	104.6	138.3	52.9	158.9	12.70	80.6	287
328TS	725.1	152.4	374.6	304.8	---	104.6	95.3	47.63	88.9	12.70	50.8	286
364T	849.4	155.4	381.0	---	285.7	158.8	149.4	60.33	142.7	15.88	108.0	392
364TS	795.3	155.4	381.0	---	285.7	104.6	95.3	47.63	88.9	12.70	50.8	389
364T	849.4	155.4	381.0	311.1	---	158.8	149.4	60.33	142.7	15.88	108.0	403
364TS	795.3	155.4	381.0	311.1	---	104.6	95.3	47.63	88.9	12.70	50.8	400
404T	973.1	174.8	406.4	---	311.1	190.5	184.1	73.02	177.8	19.05	142.7	553
404TS	896.9	174.8	406.4	---	311.1	114.3	108.0	53.97	101.6	12.70	69.9	549
405T	973.1	174.8	406.4	349.2	---	190.5	184.1	73.02	177.8	19.05	142.7	571
405TS	896.9	174.8	406.4	349.2	---	104.6	108.0	53.97	101.6	12.70	69.9	572
444T	1038.4	209.6	482.6	---	368.3	227.1	215.9	85.27	209.6	22.22	174.8	750
444T	1133.3	209.6	482.6	419.1	---	227.1	215.9	85.27	209.6	22.22	174.8	843
445TS	1038.4	209.6	482.6	419.1	---	31.8	120.7	60.33	114.3	15.88	76.2	836

- (1) SPECIAL DIMENSIONS APPLYING TO THIS ORDER ON THIS LINE.
- (2) "D" VARIES $\begin{cases} 250T - 320T +0, -8. \\ 360T - 440T +0, -1.5. \end{cases}$
- (3) "U" VARIES $\begin{cases} \text{Up to } 41.27 \text{ DIA.} +.000, -.013 \\ 41.27 \text{ AND LARGER} +.00, -.03. \end{cases}$
- (4) ALL FRAMES HAVE EIGHT MOUNTING HOLES FOR DIAL MOUNTING.
- (5) MOTOR WEIGHTS MAY VARY BY 15% DEPENDING UPON RATING.
- (6) "N-W" VARIES +0, -6.4.
- (7) DIMENSIONS ARE IN INCHES.
- (8) AUXILIARY CONDUIT BOX SUPPLIED WHEN SPECIFIED.
- CONDUIT BOXES LOCATED ON OPPOSITE SIDE WHEN F-4-W-1, W-4-W-5-W-7, OR C-1 MOUNTING IS SPECIFIED.
- IF MOUNTING CLEARANCE DETAILS ARE REQUIRED, CONSULT FACTORY.
- MAXIMUM PERMISSIBLE SHAFT RUNOUT WHEN MEASURED AT END OF STD. SHAFT EXTENSION IS .08 T.I.R. UP TO .10 T.I.R. FOR 41.27 DIA. AND .08 T.I.R. FOR 41.27 DIA. TO 127 MILLIDIA.

FRAME _____ TYPE _____ CERTIFIED FOR _____
 ORDER _____ ITEM _____ HP _____ RPM _____ PH _____ HZ _____ VOLTS _____
 SALES ORDER _____ APPROVED BY _____ DATE _____

ZHS-105-074119

CUSTOMER IS RESPONSIBLE FOR DETERMINING THAT MOTOR PERFORMANCE IS SUITABLE IN THE APPLICATION.

REV. DESC: REMOVING TITLEBLOCK	VERSION: 01	TDR: 000000448517
REV. LTR: A	REVISED: 14:09:46 11/07/2007	BY: CONBPM
FILE: \RAG\00004\526		
MTL: -		

BALDOR • DODGE • RELIANCE

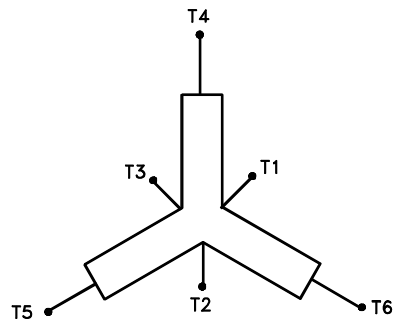
DIM SHT 250T-440T TEFC FT MTG STD T & TS SGL EXT XT

416820-196

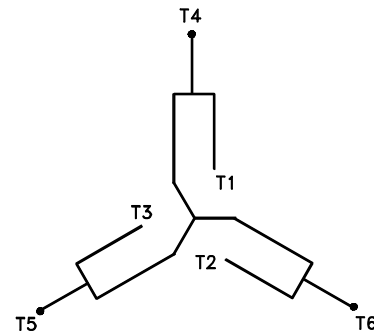
A-C MOTOR
CONNECTION DIAGRAM

SINGLE WINDING

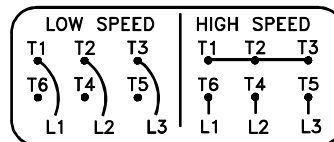
MULTI-SPEEDS



CONSTANT TORQUE



VARIABLE TORQUE



(N. P. 1634-DE)

416820-196

REV. DESC: LOADED TO BUS, C/R 395572		
REV. LTR: -	VERSION: 00	TDR: 000000538207
FILE: \MGA\00000\767	REVISED: 09:43:37 05/03/2010	
MTL: -	BY: RAGRA	

BALDOR

CONN DIAG - SINGLE WINDING, MULTI-SPEEDS

SH 1 of 1

REL. S.O.	FRAME	HP	TYPE	PHASE/HERTZ	RPM	VOLTS
	284T	25/6.25	PM	3/60	1775/885	460
AMPS	DUTY	AMB °C/ INSUL.	S.F.	NEMA DESIGN	CODE LETTER	ENCL.
31.2/12.1	CONT	40/B	1.15	-	H	FCKE
E/S	ROTOR	TEST S.O.	TEST DATE	STATOR RES. @25 °C (BETWEEN LINES)		
587610	418139-031-NE	---	---	.367/1.47		

PERFORMANCE

LOAD	HP	AMPERES	RPM	POWER FACTOR %	EFFICIENCY %
NO LOAD	0 / 0	11.6 / 7.4	1800 / 900	6.80 / 6.38	0 / 0
1/4	6.27 / 1.57	13.8 / 8.1	1794 / 897	48.7 / 24.2	87.3 / 74.8
2/4	12.5 / 3.13	18.4 / 9.1	1789 / 894	69.6 / 38.4	91.6 / 84.0
3/4	18.7 / 4.68	24.4 / 10.4	1782 / 891	78.0 / 48.5	92.4 / 86.7
4/4	25.0 / 6.25	31.2 / 12.1	1776 / 887	81.6 / 55.4	92.1 / 87.3
5/4	31.3 / 7.81	38.5 / 13.9	1768 / 883	83.2 / 60.5	91.3 / 86.9

SPEED TORQUE

	RPM	TORQUE % FULL LOAD	TORQUE LB.-FT.	AMPERES
LOCKED ROTOR	0 / 0	222 / 147	164 / 54.3	217 / 44.9
PULL UP	700 / 150	191 / 139	141 / 51.5	198 / 42.3
BREAKDOWN	1657 / 842	279 / 205	207 / 75.8	119 / 27.8
FULL LOAD	1776 / 887	100 / 100	73.9 / 37.0	31.2 / 12.1

AMPERES SHOWN FOR 460. VOLT CONNECTION. IF OTHER VOLTAGE CONNECTIONS ARE AVAILABLE, THE AMPERES WILL VARY INVERSELY WITH THE RATED VOLTAGE

REMARKS: XE MOTOR-CALCULATED DATA-HIGH SPEED NOM. EFF. 91.7 PCT
HIGH SPEED GUAR MIN EFF-91.0 PCT

	DR. BY C.R. THOMPSON	A-C MOTOR PERFORMANCE DATA E03423-D-R001 ISSUE DATE 10/19/94
	CK. BY K.W. KANOUFF APP. BY K.W. KANOUFF DATE 10/19/94	