

# ADAM-5080

# ADAM-5081

## 4-ch Counter/Frequency Module

## 4/8-ch High Speed Counter/Frequency Module



ADAM-5080



### Specifications

#### General

- **Certification** CE, FM
- **Connectors** 1 x Plug-in screw terminal (# 14 ~ 22 AWG)
- **Enclosure** ABS+PC
- **Power Consumption** 1.5 W (max.)

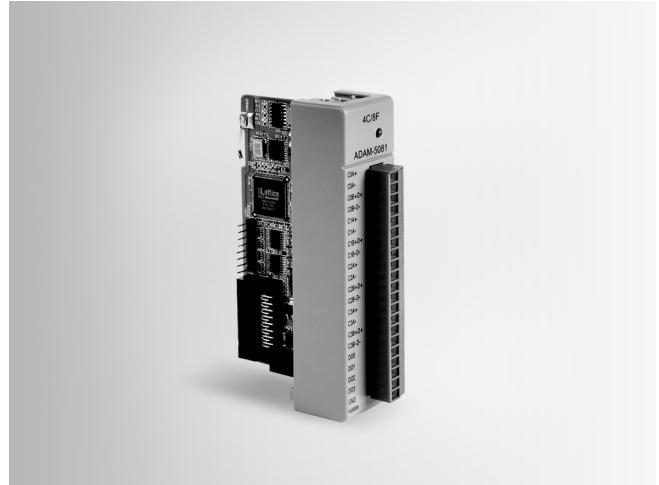
#### Counter/Frequency

- **Counter Aux. Function** Initial preset, hi-low alarm setting, alarm digital output mapping, overflag
- **Channels** 4
- **Input Frequency** 0.3 ~ 1,000 Hz max. (frequency mode)  
5,000 Hz max. (counter mode) TTL only
- **Input Level** Isolated or TTL level
- **Isolation Input Level** Logic level 0: 1 V<sub>DC</sub> max  
Logic level 1: 3.5 ~ 30 V<sub>DC</sub>
- **Isolation Voltage** 1,000 V<sub>RMS</sub>
- **Maximum Count** 4,294,967,295 (32 bits)
- **Minimum Input Current** 2 mA (isolated)
- **Minimum Pulse Width** 500 μs (frequency mode)  
100 μs (counter mode)
- **Modes** Counter (up/down, bi-direction), Frequency
- **Programmable Digital Filter** 1 ~ 65,000 μsec (Noise Filter Function)
- **TTL Input Level** Logic level 0: 0 ~ 0.8 V<sub>DC</sub>  
Logic level 1: 2.3 ~ 5 V<sub>DC</sub>

**Note:** Does not support ADAM-5550 & 5560 Series

### Ordering Information

- **ADAM-5080** 4-ch Counter/Frequency Module



ADAM-5081



### Specifications

#### General

- **Certification** CE
- **Connectors** 1 x plug-in screw terminal (# 14 ~ 18 AWG)
- **Power Consumption** 1.1 W (Max.)
- **Enclosure** ABS+PC

#### Counter/Frequency

- **Channels** 4/8
- **Maximum Count** 4,294,967,295 (32 bit)
- **Input Frequency** 5 Hz ~ 1 MHz max. (frequency mode)  
1 MHz max. (counter mode)
- **Input Level** Isolated or TTL level
- **Minimum Pulse Width** 1 μsec. (frequency mode)  
1 μsec. (counter mode)
- **Minimum Input Current** 2 mA (isolated)
- **Isolation Input Level** Logic level 0: 3 V<sub>DC</sub> max,  
Logic level 1: 10 ~ 30 V<sub>DC</sub>
- **TTL Input Level** Logic level 0: 0 ~ 0.8 V<sub>DC</sub>,  
Logic level 1: 2.3 ~ 5 V<sub>DC</sub>
- **Isolation voltage** 2,500 V<sub>RMS</sub>
- **Modes** Counter (up/down, bi-direction, up, A/B Phase),  
Frequency
- **Counter Aux. Function** Initial preset, hi-low alarm setting, alarm digital output mapping, overflag
- **Programmable Digital Filter** 1 ~ 65,000 μsec (Noise Filter Function)

**Note:** Does not support ADAM-5510 KW series

### Ordering Information

- **ADAM-5081** 4/8-ch High Speed Counter/Frequency Module